



CN665D-ST

Decking Coil Nailer



OPERATING & MAINTENANCE MANUAL



WARNING

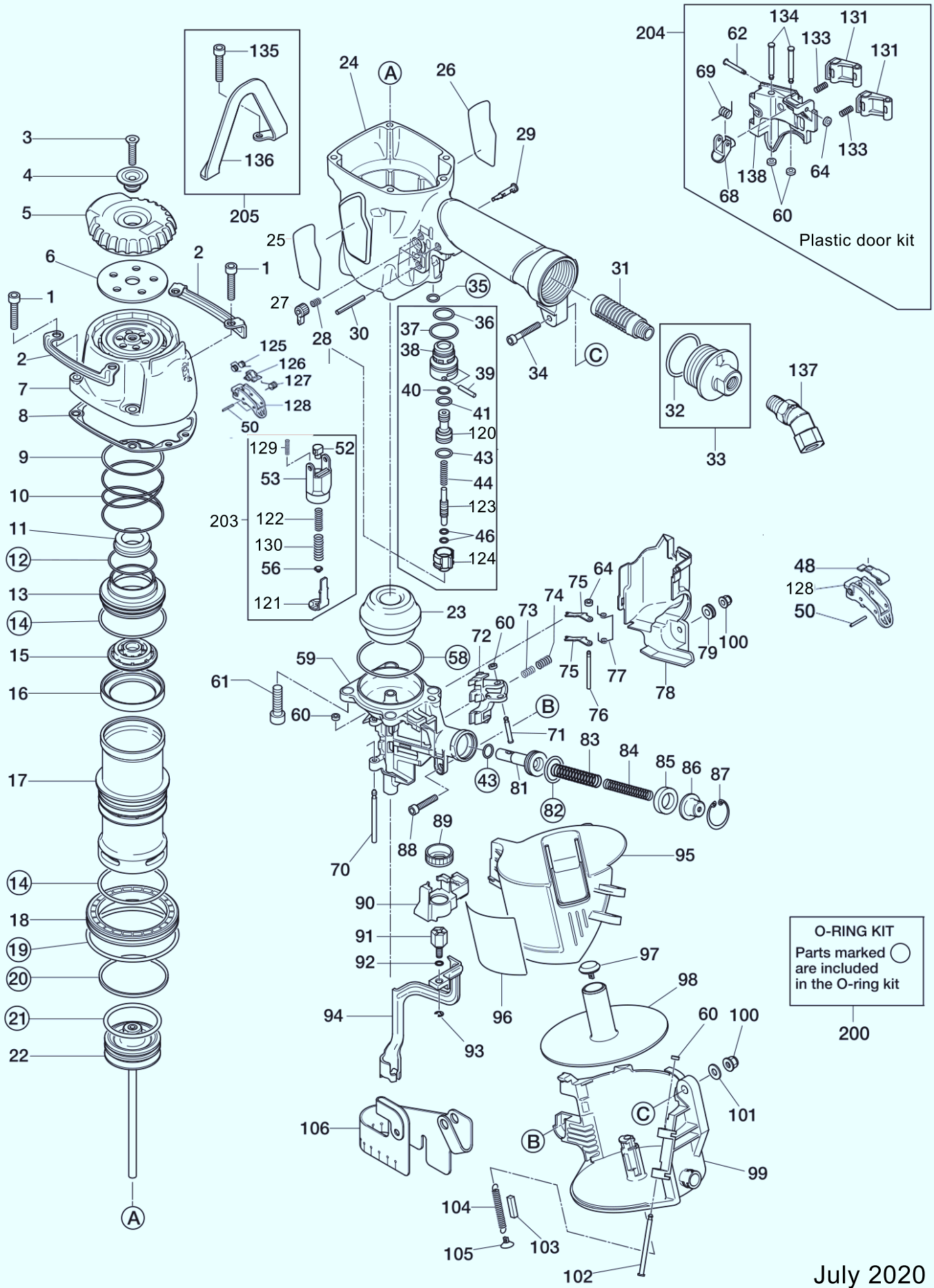
BEFORE USING THIS TOOL, STUDY THIS MANUAL TO ENSURE SAFETY WARNING AND INSTRUCTIONS.

KEEP THESE INSTRUCTIONS WITH THE TOOL FOR FUTURE REFERENCE.

JULY 2020

CN665D-ST

EXPLODED
VIEW AND SPARE
PARTS LIST



O-RING KIT
Parts marked  are included
in the O-ring kit

200

MAX® CN665D-ST Coil Nailer Spare Parts List

INDEX	CODE	DESCRIPTION	INDEX	CODE	DESCRIPTION	INDEX	CODE	DESCRIPTION
1	BB40422	BOLT 6X30	52	CN35059	CONTACT ARM GUIDE PIN	105	CN30602	SPRING HOOK
2	CN36348	PROTECTOR	53	CN37842	ARM GUIDE	106	CN36339	DUST COVER
3	AA82411	SCREW M6X27	56	CN35004	CONTACT BUMPER	120	CN33627	PILOT VALVE
4	KN11393	EXHAUST COVER HOLDER	58	HH11162	O-RING 1AS568-140	121	CN35140	CONTACT ARM A
5	CN35294	EXHAUST COVER	59	CN36315	NOSE	122	KK23735	COMP. SPRING 3735
6	KN11392	FILTER B	60	EE39602	RUBBER WASHER 7	123	CN33723	TRIGGER VALVE STEM
7	CN70541	CYLINDER CAP UNIT	61	BB40443	SCREW M8 X 28	124	CN31346	TRIGGER VALVE CAP
8	CN36308	CYLINDER CAP SEAL	62	FF41599	PIN 1599	125	KK33247	SPRING 3247
9	CN36331	WASHER, CYLINDER CAP	64	EE39609	RUBBER WASHER 1.8X6X2	126	TA16138	S.T. LEVER
10	KK23655	COMP. SPRING 3655	68	CN33679	DOOR LATCH	127	KK33144	TORSION SPRING 3144
11	CN36107	PLAIN WASHER B	69	KK33261	TORSION SPRING 3261	128	CN35714	TRIGGER
12	HH11141	O-RING 1AS568-130	70	FF31257	STRAIGHT PIN 1257	129	KK23282	COM. SPRING 3282
13	CN35290	HEAD VALVE PISTON	71	FF41817	STEP PIN 1817	130	KK23736	COMPRESSION SPRING 3736
14	HH12101	O-RING 1AG55	72	CN36349	FEED PAWL	131	CN36319	RATCHET B
15	CN35289	PISTON STOP	73	KK23710	COMP. SPRING 3710	133	KK23332	COM.SPRING 3332
16	CN34994	HEAD VALVE SEAL	74	KK23788	COMP. SPRING 3788	134	FF41839	PIN 1839
17	CN38471	CYLINDER	75	CN34486	CHECK PAWL	135	BB40438	BOLT 6X32
18	CN36312	CYLINDER RING	76	FF31264	STRAIGHT PIN 1264	136	CN36332	HANGER
19	HH14152	O-RING 1AS568-231	77	KK33259	TORSION SPRING 3259	137	TT05423	SWIVEL JOINT
20	CN36330	O-RING A 4X55.6	78	CN36323	COVER	138	CN36318	DOOR
21	HH11809	O-RING P53	79	CN32170	COLLAR	200	CN81072	O-RING KIT CN665
22	CN70154	MAIN PISTON UNIT	81	CN36317	FEED PISTON	201	CN81010	TRIGGER VALVE KIT
23	KN11219	BUMPER	82	HH11107	O-RING AP18	203	CN80535	SEQUENTIAL TRIP KIT
24	CN81357	FRAME	83	KK23335	COM.SPRING 3335	204	CN81071	DOOR KIT FOR PLASTIC SHEET COLLATED
25	CN38464	NAME PLATE A	84	KK23627	COM.SPRING 3627	205	CN81068	HANGER KIT
26	CN38465	NAME PLATE B	85	CN37998	FEED PISTON STOP			
27	KN12622	TRIGGER LOCK LEVER	86	CN35285	SPRING COLLAR			
28	KK23507	SPRING 3507	87	JJ22408	C-RING 24			
29	KN12621	TRIGGER LOCK DIAL	88	BB40405	BOLT 5X25			
30	FF21611	ROLL PIN 3X32 AW	89	CN37836	ADJUST DIAL			
31	TA17024	FILTER A	90	CN36322	SPACER			
32	HH12118	O RING 1AG35	91	CN35006	CONTACT BOLT			
33	CN81224	END CAP	92	HH11903	O-RING 1A 1.2 X 4			
34	BB40470	SCREW 5X32	93	JJ10404	E-RING 3.2			
35	HH11105	O-RING AP7	94	CN70163	CONTACT ARM B UNIT			
36	HH11125	O-RING AP12	95	CN35651	MAGAZINE COVER			
37	HH11138	O-RING AP20	96	CN38467	WARNING LABEL USA (MAGAZINE)			
38	CN31323	TRIGGER VALVE HOUSING	97	CN37428	POST CAP			
39	FF30161	PIN 161	98	HN10389	NAIL SUPPORT			
40	HH11119	O-RING AP6	99	CN35388	MAGAZINE			
41	HH11209	O-RING 1BP7	100	CC00401	ELASTIC STOP NUT M5			
43	HH11113	O-RING AP9	101	EE31105	PLAIN WASHER 1-6			
44	KK24123	COMPRESSION SPRING 4123	102	FF41287	PIN 1287			
46	HH11901	O-RING 1.4 X 2.5	103	CN30601	SPACER			
50	FF22402	SPRING PIN 3X16	104	KK13051	SPRING 3051			